

PRESIDENTIAL STORAGE

A PORTION OF TRACT "C", PLAT I THE PRESIDENT COUNTRY CLUB, CITY OF WEST PALM BEACH, FLORIDA, ACCORDING TO THE PLAT THEREOF AS RECORDED IN PLAT BOOK 29, PAGE 72. PUBLIC RECORDS OF PALM BEACH COUNTY, FLORIDA, LYING IN SECTIONS 17 & 18, TOWNSHIP 43 SOUTH, RANGE 43 EAST, CITY OF WEST PALM BEACH, PALM BEACH COUNTY, FLORIDA.

THIS INSTRUMENT PREPARED BY
DAVID P. LINDLEY
OF
CAULFIELD and WHEELER, INC.
SURVEYORS - ENGINEERS - PLANNERS
7900 GLADES ROAD, SUITE 100
BOCA RATON, FLORIDA 33434 - (561)392-1991
CERTIFICATE OF AUTHORIZATION NO. LB3591
JULY - 2016

TRACT "C"
PLAT I
THE PRESIDENT COUNTRY CLUB
PLAT BOOK 29 PAGE 72

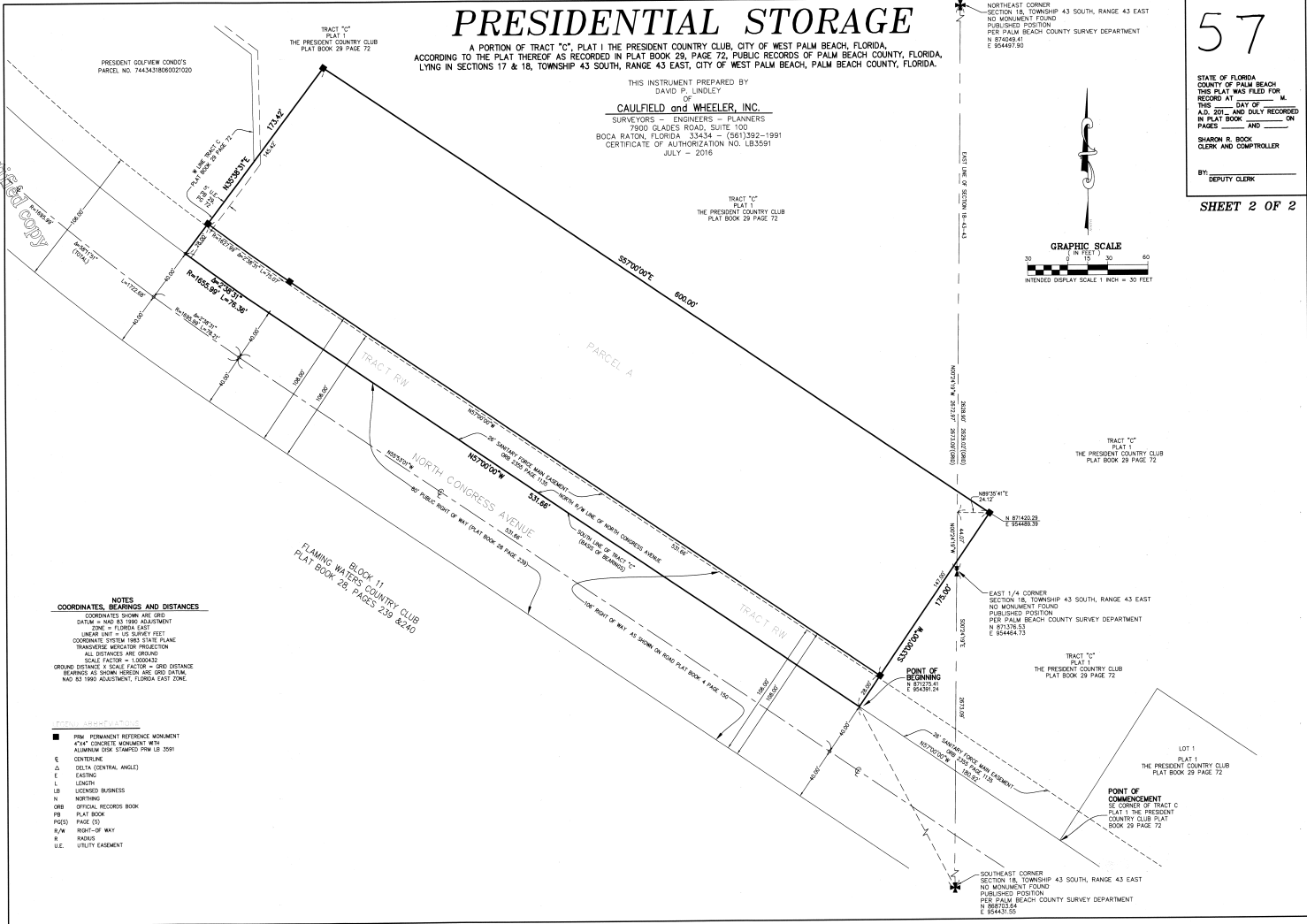
NORTHEAST CORNER
SECTION 18, TOWNSHIP 43 SOUTH, RANGE 43 EAST
NO MONUMENT FOUND
PUBLISHED POSITION
PER PALM BEACH COUNTY SURVEY DEPARTMENT
N 87409.41
E 95489.91

57

STATE OF FLORIDA
COUNTY OF PALM BEACH
THIS PLAT WAS FILED FOR
RECORD AT _____ M.
THIS _____ DAY OF _____
A.D. 2016 AND DULY RECORDED
IN PLAT BOOK _____ ON
PAGE _____ AND
SHARON B. BOOK
CLERK AND COMPTROLLER

BY: _____
DEPUTY CLERK

SHEET 2 OF 2



This is not a certified copy

NOTES
COORDINATES, BEARINGS AND DISTANCES
COORDINATES SHOWN ARE GRID
DISTANCE IS HAD 85 TIER ADJUSTMENT
ZONE = FLORIDA EAST
UNITS ARE IN FEET
COORDINATE SYSTEM 1983 STATE PLANE
TRANSVERSE MERIDIAN PROJECTION
ALL DISTANCES ARE GROUND
SCALE FACTOR = 1.0000432
GROUND DISTANCE X SCALE FACTOR = GRID DISTANCE
BEARINGS AS SHOWN HEREON ARE GRID DATA
NAD 83 1990 ADJUSTMENT, FLORIDA EAST ZONE.

- LEGEND**
- PERM PERMANENT REFERENCE MONUMENT
 - * PLAT CONCRETE MONUMENT WITH ALUMINUM DISK STAMPED PER LB 2591
 - C CENTERLINE
 - Δ DELTA (CENTRAL ANGLE)
 - E EASTING
 - L LENGTH
 - LB LICENSED BUSINESS
 - N NORTHING
 - ORB OFFICIAL RECORDS BOOK
 - PB PLAT BOOK
 - PG(S) PAGE(S)
 - SIGHT-OF-WAY
 - R/W RIGHTS
 - U.E. UTILITY EASEMENT